

Room Management

— User Manual —

DISCLAIMER

No warranty or representation, either expressed or implied, is made with respect to the contents of this documentation, its quality, performance, merchantability, or fitness for a particular purpose.

Information presented in this documentation has been carefully checked for reliability; however, no responsibility is assumed for inaccuracies. The information contained in this documentation is subject to change without notice.

In no event will AVer Information Inc. be liable for direct, indirect, special, incidental, or consequential damages arising out of the use or inability to use this product or documentation, even if advised of the possibility of such damages.

TRADEMARKS

“AVer” is a trademark owned by AVer Information Inc. Other trademarks used herein for description purpose only belong to each of their companies.

COPYRIGHT

© 2024 AVer Information Inc. All rights reserved. | December 27, 2024

All rights of this object belong to AVer Information Inc. Reproduced or transmitted in any form or by any means without the prior written permission of AVer Information Inc. is prohibited. All information or specifications are subject to change without prior notice.

More Help

For FAQs, technical support, software and user manual download, please visit:

Non-USA

Download Center: <https://www.aver.com/download-center>

Technical Support: <https://www.aver.com/technical-support>

USA

Download Center: <https://www.averusa.com/business/support>

Technical Support: <https://averusa.force.com/support/s/contactsupport>

Contact Information

Headquarters

AVer Information Inc.
8F, No.157, Da-An Rd.,
Tucheng Dist., New Taipei City
23673, Taiwan
Tel: +886 (2) 2269 8535

USA Branch Office

AVer Information Inc., Americas
44061 Nobel Drive, Fremont, CA
94538, USA
Tel: +1 (408) 263 3828
Toll-free: +1 (877) 528 7824

Europe Branch Office

AVer Information Europe B.V.
Westblaak 134, 3012 KM,
Rotterdam, The Netherlands
Tel: +31 (0) 10 7600 550

Japan Branch Office

アバー・インフォメーション株式会社
〒160-0023 日本東京都新宿区
西新宿 3-2-26 立花新宿ビル 7
階
Tel: +81 (0) 3 5989 0290
お客様サポートセンター(固定電
話のみ): +81 (0) 120 008 382

Vietnam Branch Office

Công ty TNHH AVer Information
(Việt Nam)
Tầng 5, 596 Nguyễn Đình Chiểu,
P.3, Quận 3, Thành phố Hồ Chí
Minh 700000, Việt Nam
Tel: +84 (0) 28 22 539 211
Hỗ trợ kỹ thuật: +84 (0) 90 70
080 77

Korea Office

한국 에버 인포메이션 (주)
서울시 종로구 새문안로 92
(신문로 1 가,
광화문오피시아빌딩) 1831,
1832 호
Tel: +82 (0) 2 722 8535

Contents

Overview	1
System Requirements	1
Install Room Management	1
Open and Quit Room Management	2
Supported AVer Devices	3
Get Started	4
Devices Control	4
Device Card Overview	5
Floating Live View Overview	6
Virtual Camera	7
IP Stream	7
Keystone Correction.....	9
Smart Gallery	11
Configure Settings on Room Management	13
PTZ Control	13
Interface 1	14
Save, Load and Clear a Preset	15
Add and Delete Available Presets (Presets 10-127)	15
Interface 2	16
Save and Load a Preset.....	17
Settings	18
Tracking Mode	24
System	26
Audio	27
Audio Tracking	29
Dual Camera Tracking	31

Overview

Room Management, formerly known as PTZApp 2, is a free software for Windows® and Mac® computers that enables full control of AVer USB device functions. In Room Management, you can configure device settings including the PTZ controls, AI tracking functions, the advanced image and audio settings, and more.

System Requirements

Windows

- CPU: Intel Core i5-6xxx 3.0GHz
- RAM: 4G
- HDD: 3G (free space)
- OS: Windows 7 (64 bits), Windows 10 (64 bits), Windows 11 (64 bits)

Mac

- CPU: 1.3 GHz Intel Core i5
- RAM: 8G
- HDD: 3G (free space)
- OS: MacOS 11.6





Install Room Management

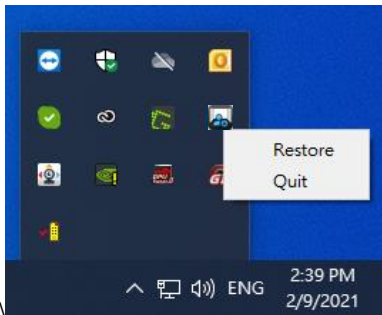
1. Download Room Management from AVer Download Center. (<https://www.aver.com/download-center>), and double-click the downloaded .exe file to launch.
2. Follow the setup wizard to install the application.
3. You'll be prompted to install plug-ins for additional features.

Note:

If you have already downloaded PTZApp 2, please uninstall the application before installing Room Management.

Open and Quit Room Management

1. Double-click the Room Management icon  to launch the application.
2. Connect your AVer device to your computer with a USB cable. When Room Management detects a USB-connected device, a device card will appear under USB Devices.
3. Click the **Setting** button  on your device card for pan, tilt and zoom controls, presets, and advanced settings.
4. To quit Room Management, click the **Show Hidden Icons** arrow on the taskbar, right-click the Room Management icon , and select **Quit**.
5. If you can't open Room Management after installation, click the **Show Hidden Icons** arrow on the taskbar, right-click the Room Management icon , and select **Restore**.



Supported AVer Devices

Video Conferencing Cameras

CAM570	FONE700	VB350	VC540
CAM550	FONE540	VB342 Pro	VC520 Pro3
CAM540		VB342+	VC520 Pro2
CAM530		VB342	VC520 Pro
CAM520 Pro3		VB130	VC520+
CAM520 Pro2			VC520
CAM520 Pro			VC322
CAM520			
CAM340+			
CAM340			
CAM130			

Professional Tracking Cameras

V3	V2	
	USA	Outside USA
TR211	TR311HVV2	PTC310HVV2
TR315	TR313V2	PTC310UV2
TR315N	TR333V2	PTC330UV2
TR335	TR323V2	PTC320UV2
TR335N	TR323NV2	PTC320UNV2

Professional PTZ Cameras

PTZ330UV2
PTZ330UNV2
PTZ310UV2
PTZ310UNV2
PTZ231
PTZ211

Note: This list is subject to change without notice. Refer to the release note from AVer Download Center for the most updated list.

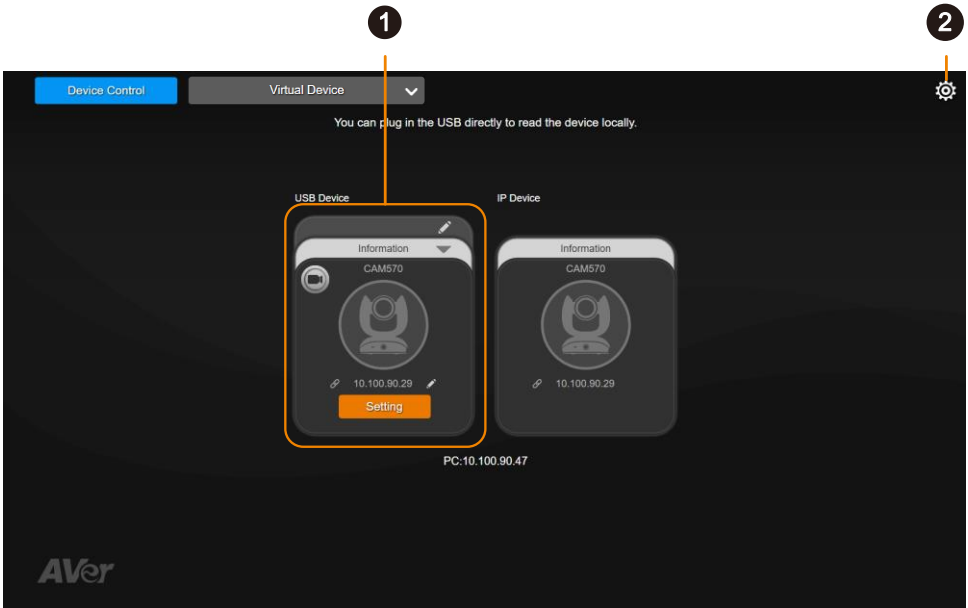
Get Started

The Room Management interface includes the following pages:

- Device Control
- Virtual Camera

Devices Control

Room Management opens to Devices Control page. When a device is connected, you will see the device cards below USB Device or IP Device based on the connection method.



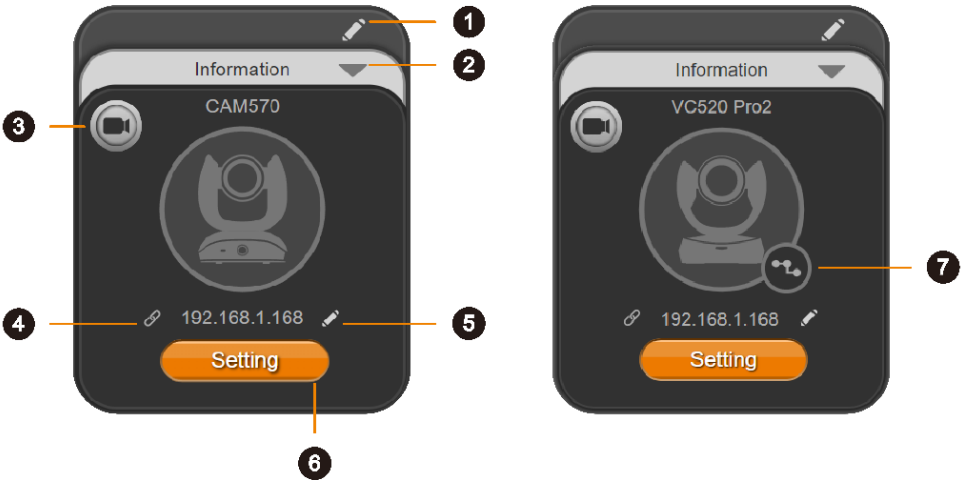
1. Device Card

Represents a connected AVer device through a USB cable or a Ethernet cable

2. Room Management Settings

Item	Description
Language	Change the Room Management interface language to English, Chinese or Japanese.
Hotkey Control	Turn hotkey on or off.
Room Management Update	View Room Management version or check for updates.
Usage Data	Opt-in or opt-out of providing anonymous usage data.
EZManager Pair	Pair with EZManager to manage all your USB-connected AVer devices.


Device Card Overview



1. Name

Click the **pencil icon**  to name your device.


2. Information

Click the **triangle icon**  to expand the device information (e.g., firmware version).
Click again to collapse.


3. Live View

Click the **video recorder icon** to open a floating live view.


4. Web Interface

Click the **hyperlink icon**  to access your device's web interface via IP connection on your browser.


5. Edit IP Address

Click the **pencil icon**  to switch between static IP and DHCP connection. The default static IP address is **192.168.1.168**.

6. Setting

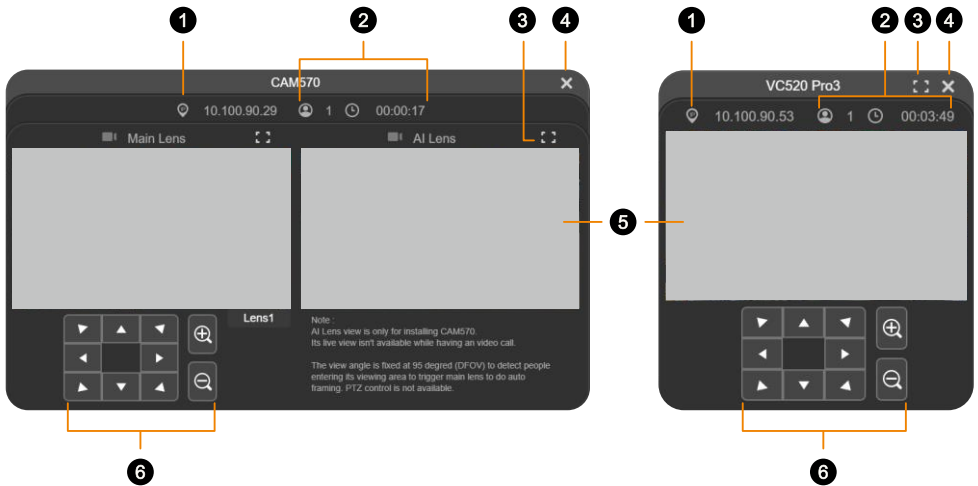
Click the **Setting button**  for pan-tilt-zoom controls, presets, and advanced settings.

7. Extended Speakerphone or Microphone (VC devices only)

Click the **extension icon**  to see your extended speakerphones or microphones.


Floating Live View Overview

Note: The floating live view interface may vary depending on your device and firmware version.





1. IP Address


2. Head Count and Video Transmission Duration

Click the **head count** icon  to display head count and the duration of your video transmission. Click the icon again to hide the information.

3. Full Screen

Click the **full screen** icon  to expand the live view in full screen. Click the icon  or press **Esc** on your keyboard to exit full screen.

4. Close

Click the **X** icon  to close the floating live view and stop transmitting video.

5. Live View

6. Directional Pad and Zoom

Virtual Device

Virtual Device includes the following three functions:

- [IP Stream](#)
- [Keystone Correction](#)
- [Smart Gallery](#)

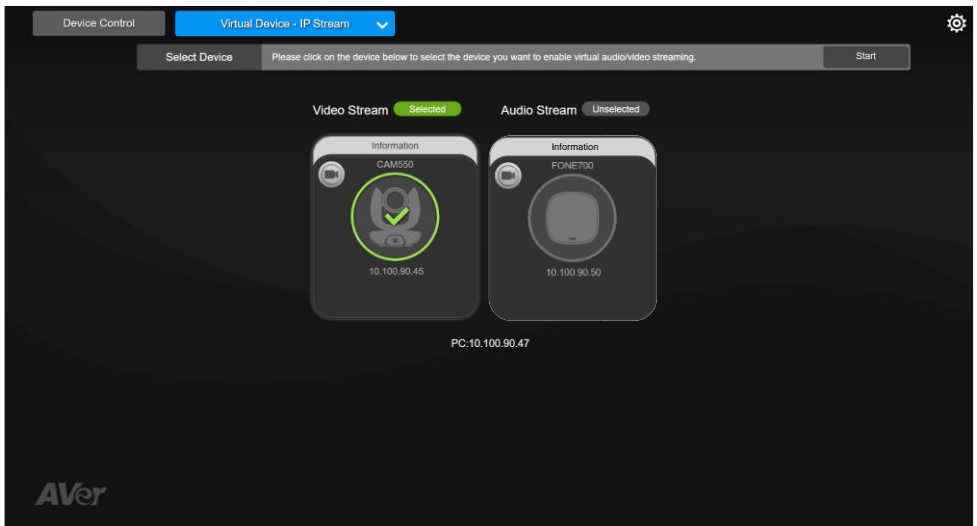
Select one from the Virtual Device drop-down list for further configurations.

For more information on each function, please refer to the corresponding chapter.

IP Stream

IP Stream allows you to send a single video and audio feed over IP to video conferencing software such as Teams, Skype and Zoom.

- Video latency may vary depending on your CPU. We recommend Intel Core i5 or higher.



To start a virtual stream:

1. Make sure your device and the computer running the video conferencing software are connected to the same network.
2. Make sure you have enabled your device's RTSP setting on its web interface.
3. Click **Virtual Device > IP Stream**, and select your device.
4. Click **Start** on the upper right corner.

- Enter the RTSP password, if any.
5. Open your video conferencing software. Choose **AVer USB VCam** for video, **AVer VMic Device** for microphone, and **AVer VSpk Device** for speaker, not your device model name.
 6. For pan, tilt and zoom controls, use a remote control or VISCA commands.

To stop a virtual stream:

Click **Stop** on your device card.

Keystone Correction

Keystone Correction adjusts the geometry of an image to make it appear rectangular and aligned.

- Keystone Correction is available on Windows only.
- When using Teams Room, disable **Content Enhancement** for a better result.





Device Control **Virtual Device - Keystone Correction** ⌵ ⚙️

Operation :

1. Connect the camera with USB.
2. If the connection is done, the camera card appears.

Information

VC520 Pro2



10.100.95.36

Start

Note :

1. When starting the function, you'll find both "camera model name" and "AVer USB VCam" as video sources in VC software such as Zoom app. Please choose "AVer USB VCam".
2. Please switch off this function while enabling "Content enhancement" function in Teams Rooms app since Teams has its keystone correction effects. (Only for CAM130 content camera)
3. To use Auto detection function, your PC should have independent graphic card to support it.
4. Supported models: CAM130 content camera / CAM520 Pro2 / VC520 Pro2.

PC:10.100.90.47

AVer

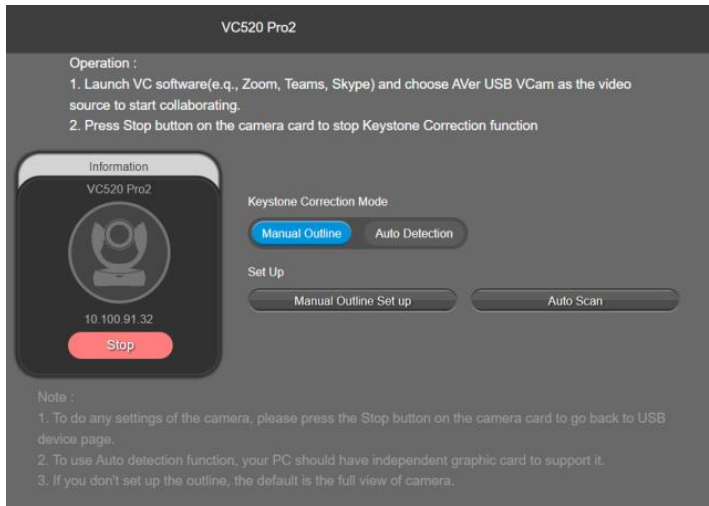
To use Keystone Correction:

1. Connect your device to the computer with a USB cable.
2. Click **Virtual Device** > **Keystone Correction**, and click **Start** on your device card.
3. Open your video conferencing software. Choose **AVer USB VCam** for video, not your device model name.
4. Select **Manual Outline** or **Auto Detection**, then adjust the border as follows.

To stop using Keystone Correction:

Click **Stop** on your device card.

- **Manual Outline**



1. Select **Manual Outline** > **Manual Outline Set up**.
2. Drag the corners to adjust the frame to fit your desired area, such as the whiteboard. Click **Next**.



3. Click **Edit** to resize. Click **Save** to finish.

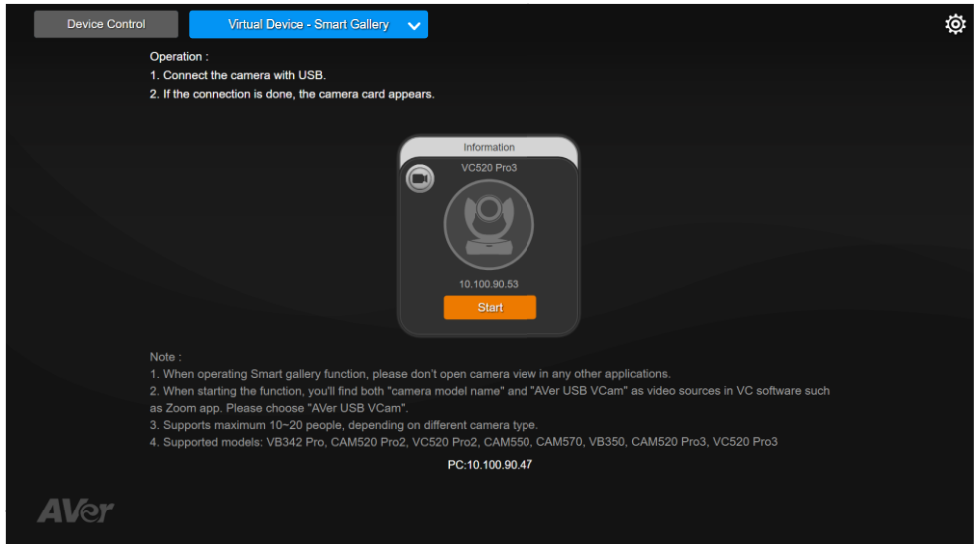
- **Auto Detection**

1. Select **Auto Detection** > **Auto Scan**.
2. If prompted, follow the on-screen instructions to download and install the keystone package.
Note: Your computer must have an independent graphic card to support Auto Detection.
3. Click **Edit** to resize. Click **Save** to finish.

Smart Gallery

Smart Gallery creates a close-up frame for each participants and present them in a single stream composited gallery.

- Smart Gallery supports 10-20 people depending on your AVer device model.



To use Smart Gallery:

1. Connect your device to the computer with a USB cable.
2. Click **Virtual Device** > **Smart Gallery**, and click **Start** on your device card.
3. Select a layout.



4. Open your video conferencing software. Choose **AVer USB VCam** for video, not your device model name.

To stop using Smart Gallery:

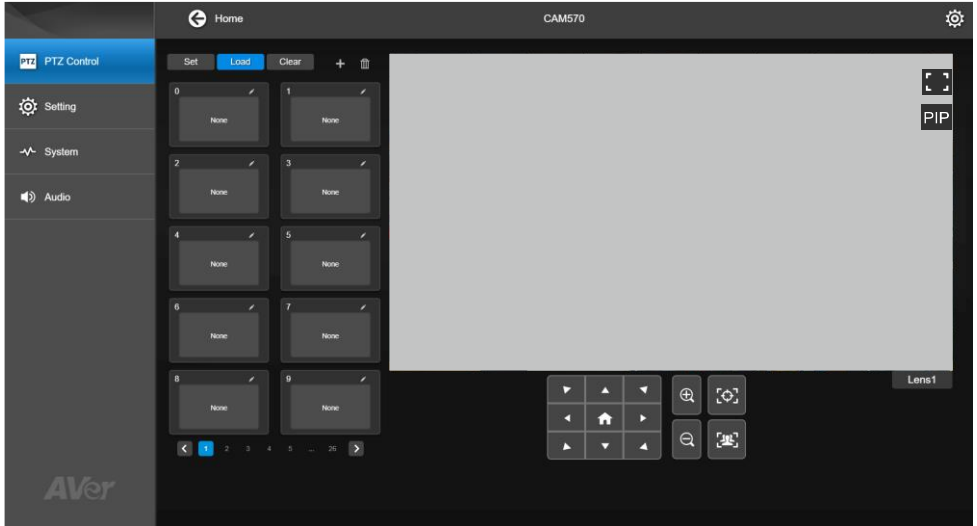
Click **Stop** on your device card.

Configure Settings on Room Management

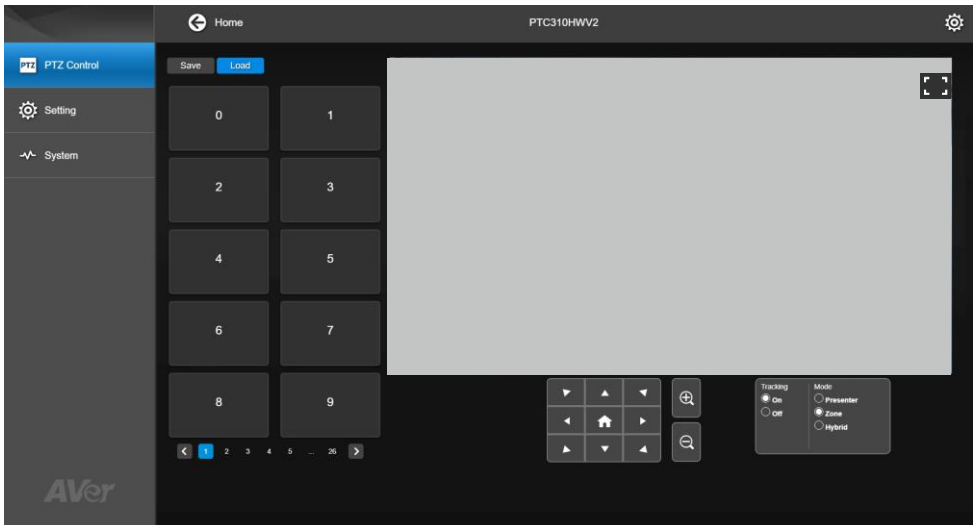
PTZ Control

Note: The PTZ Control interface may vary depending on your device and firmware version.

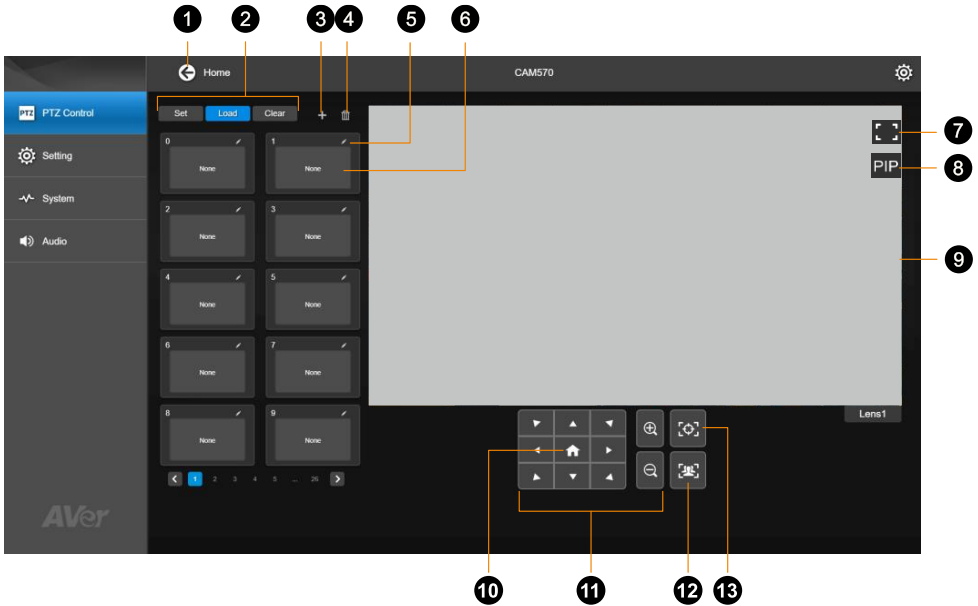
- **Interface 1 (For Video Conferencing Cameras)**



- **Interface 2 (For Professional Tracking Cameras)**



Interface 1



1. Home
Click to return to the Device Control page.

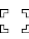
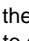
2. Preset Function

3. Add
Click the plus icon  to add a preset.

4. Delete
Click a trashcan icon  to delete a preset.

5. Name
Click the pencil icon to name a preset.

6. Thumbnail
Display the preset camera view.


7. Full Screen
Click the full screen icon  to expand the live view in full screen. Click the icon  or press **esc** on your keyboard to exit full screen.


8. Picture-in-Picture

9. Live View

10. Pan-Tilt Reset
Reset the pan-tilt position to the center.

11. Directional Pad and Zoom

12. SmartFrame
Click the SmartFrame icon  to frame entire group on screen and remove excess space.

Note: The SmartFrame icon  appears on video when triggered. To hide the icon, go to the **Setting** tab > **On-Screen Menu** > **Off**.

13. One-Touch Focus
Click to autofocus once.

Save, Load and Clear a Preset



To save a preset:

1. Use the pan, tilt and zoom controls to position your device.
2. Click **Set**, then a preset number to save that position.
3. Click **Yes** when prompted. A thumbnail of your preset will display.

To load a preset:

Click **Load**, then a preset number to load that position.

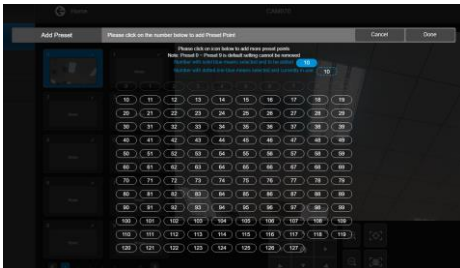
To clear a preset:

Click **Clear**, then a preset number to clear that position.

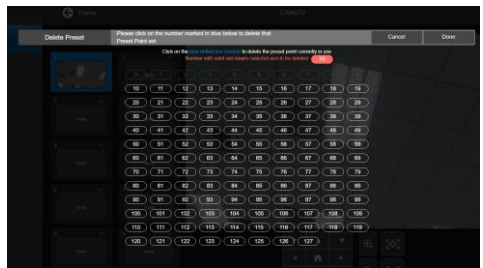
Add and Delete Available Presets (Presets 10-127)

By default, there are 10 available presets 0-9 by default.

Click the plus icon to add up to 128 available presets, or click the trashcan icon to delete available presets.



Add



Delete

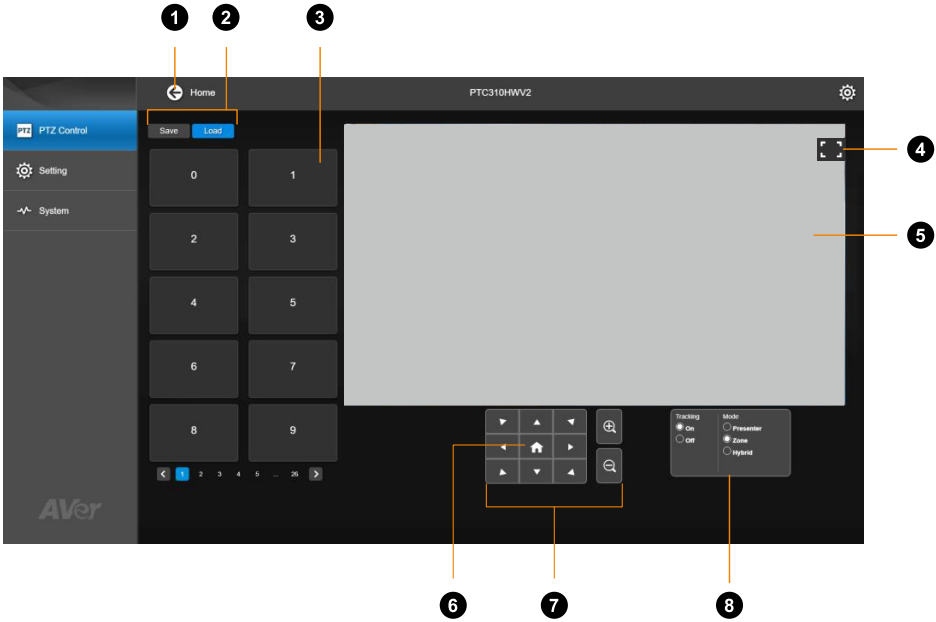
To add an available presets:

1. Select the plus icon, then select the preset numbers you want to add.
2. Select **Done**.

To delete an available preset:

1. Select the trashcan icon, then select the preset numbers you want to delete.
2. Select **Done**.

Interface 2



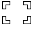
1. Home


Click to return to the Device Control page.

2. Preset Function

3. Preset Number

4. Full Screen

Click the full screen icon  to expand the live view in full screen.

Click the icon  or press **esc** on your keyboard to exit full screen.

5. Live View

6. Home

Reset the pan-tilt position to the center.

7. Directional Pad and Zoom

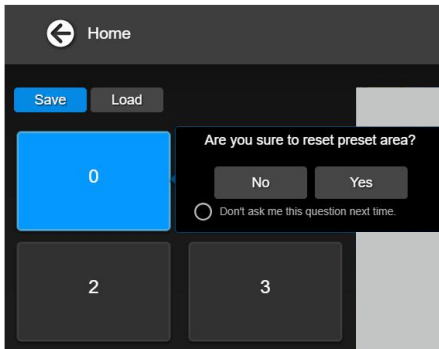
8. Tracking Control Panel

Turn Tracking on or off and select a tracking mode to follow the presenter in real time as they move. For details on tracking settings, refer to your device's user manual.

Save and Load a Preset

To save a preset:

1. Use the pan, tilt and zoom controls to position your device.
2. Select **Save**, then a preset number to save that position.
3. Select **Yes** when prompted.

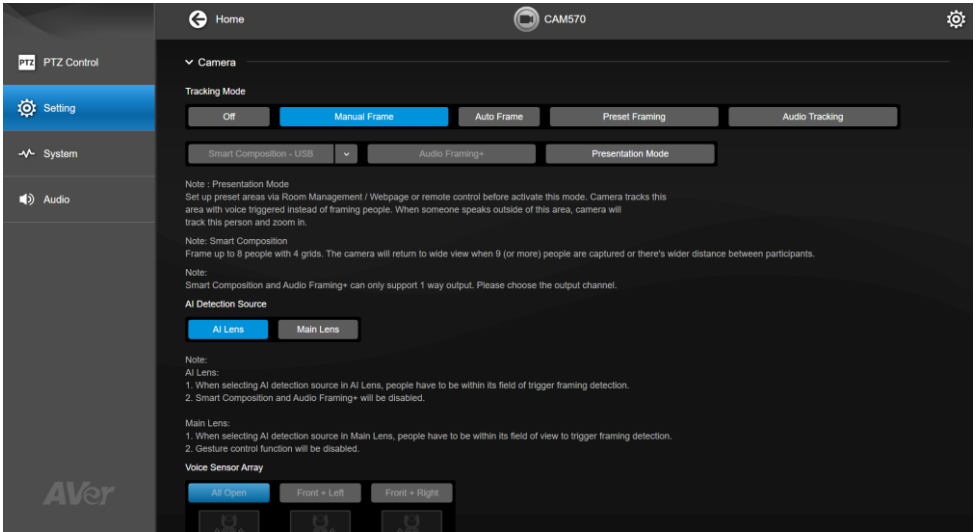



To load a preset:

Select **Load**, then a preset number to load that position.

Settings

Note: These features are device-sensitive. Refer to your device's user manual for details.



You may click on the chevron icon  **Camera** next to the name of setting categories to expand or collapse the setting list.

Camera

Item	Description
Tracking Mode	Select a tracking mode. For details, refer to <Tracking Mode> .
AI Detection Source	Select a lens to perform for AI detection for your dual-lens device. The entire group must fit inside the selected lens's field of view.
Voice Sensor Array	Select a voice sensor array.
Camera Moving Speed	Select a camera moving speed.
Framing Speed	Select a duration before auto frame: <ul style="list-style-type: none"> • Slow: 5 seconds before auto frame. • Middle: 3 seconds before auto frame. • High: 1 second before auto frame.
Framing Size	Select a framing size to include or remove excess space on either side of the subject.
Transition Effect	Select a transition effect for Audio Tracking . <ul style="list-style-type: none"> • PTZ Movement : Use pan-tilt-zoom transition. • Smart ViewShift: <ul style="list-style-type: none"> - Use dissolve effect, pan-tilt-zoom transition or a mix of both based on the distance of camera travel, to minimize disorienting movements.

	<ul style="list-style-type: none"> - Available under Audio Tracking and Presentation Mode. AI lens must be set as AI detection lens. - Smart ViewShift uses only pan-tilt-zoom transition for output over 1080p. 												
Audio Tracking Response Speed	<p>Select an audio tracking response speed. Slower response speeds can be useful for ignoring short utterances during audio tracking.</p> <ul style="list-style-type: none"> • Slow Speed: 4 second before audio tracking. • Middle Speed: 2 seconds before audio tracking. • High Speed: Fastest audio tracking response speed 												
Audio Tracking Idle Interval	<p>Select a duration for the camera to frame entire group after it detects no sound. If Off is selected, the camera will stay at the last position.</p>												
Conversation Mode Trigger Sensitivity	<p>Drag the slider to select a sensitivity level with which your camera picks up on a conversation and frame entire group on screen.</p> <table border="1"> <tr> <td>Sensitivity</td> <td>Off</td> <td>1</td> <td>2</td> <td>3</td> <td>4</td> </tr> <tr> <td>Entry</td> <td>Never</td> <td>9th sound source change</td> <td>7th sound source change</td> <td>5th sound source change</td> <td>3rd sound source change</td> </tr> </table>	Sensitivity	Off	1	2	3	4	Entry	Never	9 th sound source change	7 th sound source change	5 th sound source change	3 rd sound source change
Sensitivity	Off	1	2	3	4								
Entry	Never	9 th sound source change	7 th sound source change	5 th sound source change	3 rd sound source change								
Gesture Control	<p>Turn Gesture Control on or off.</p> <ul style="list-style-type: none"> • AI lens must be set as AI detection lens. • The effective distance is up to 5 meters. • Click the question mark icon to see a list of gesture commands or refer to <Gesture Control> for details. 												
Auto Focus	<p>Automatically focus after each pan, tilt and zoom, or automatically focus continually.</p>												
Camera Focus	<p>Adjust the focal length manually by dragging the slider or automatically.</p>												
Home Position	<p>Select a home position that your device moves to when powered on.</p>												
Sleep Position	<p>Select a home position that your device moves to when entering standby mode.</p>												
Sleep Timer	<p>Set a countdown before entering standby mode.</p> <ul style="list-style-type: none"> • When transmitting video over USB, RTSP or RTMP, the device won't enter standby mode. 												
On Screen Menu	<p>Turn On-Screen Menu on or off.</p> <ul style="list-style-type: none"> • Load Preset Off: Displays all statuses except load preset. 												
Camera Binding	<p>Set the device to a device selection buttons 1-3 on the remote control.</p> <ul style="list-style-type: none"> • When camera binding is turned off, all selections on the remote control can operate the device by default. 												
Save Preset	<p>Turn Save Preset on or off.</p> <ul style="list-style-type: none"> • When Save Preset is turned off, you won't be able to save 												

	presets using the remote control, web interface, hotkeys or VISCA commands.
--	---

PIP

Item	Description
PIP Layout	Turn picture-in-picture (PIP) on to see live view from both lenses.
HDMI Screen Layout	Select a layout for HDMI output. Click the arrows button to switch the position of the smaller video.
USB / IP Streaming Screen Layout	Select a layout for streaming over USB and IP. Click the arrows button to switch the position of the smaller video.

Image

Item	Description
Image Flip	Flip the image vertically.
Image Mirror	Flip the image horizontally.
WDR	Turn wide dynamic range (WDR) on or off.
Flicker Decrease on IFP / Monitor	Turn Flicker Decrease on IFP / Monitor on or off. 
Frequency	Select a frequency.
White Balance	Select a white balance setting: <ul style="list-style-type: none"> • Manual: Adjust the white balance manually by dragging the slider. • Auto White Balance (AWB): Adjust the white balance automatically. • Auto Tracking White Balance (ATW): Adjust the white balance automatically in a wide color temperature range as the color temperature of the light source shifts.
Noise Reduction	Adjust noise reduction level.
Brightness	Adjust brightness level.
Sharpness	Adjust sharpness level.
Saturation	Adjust saturation level.
Low Light Compensation	Turn Low Light Compensation on or off. <ul style="list-style-type: none"> • When Low Light Compensation is turned on, the frame rate will be reduced to 10-15fps.
Allow Remote Access	Turn Allow Remote Access on or off.

Extended Resolution Options	Select a resolution for extended resolution availability.
Enlarge Total Zoom Up to 36x	Enable or disable Enlarge Total Zoom Up to 36x. The default is 24X.
Video Frame Rate	Select a video frame rate.

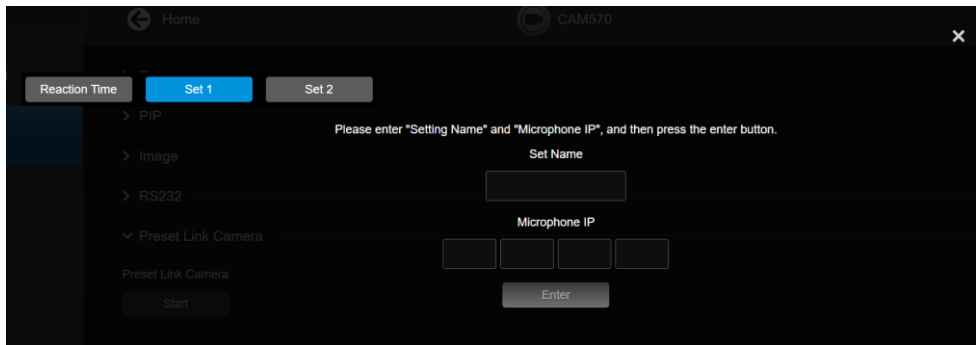
RS232

Item	Description
ADDR	Select your settings to set up an RS-232 connection.
Baud Rate	
Protocol	
VISCA over IP	
SSL Function on IP Webpage	

Preset Link Camera

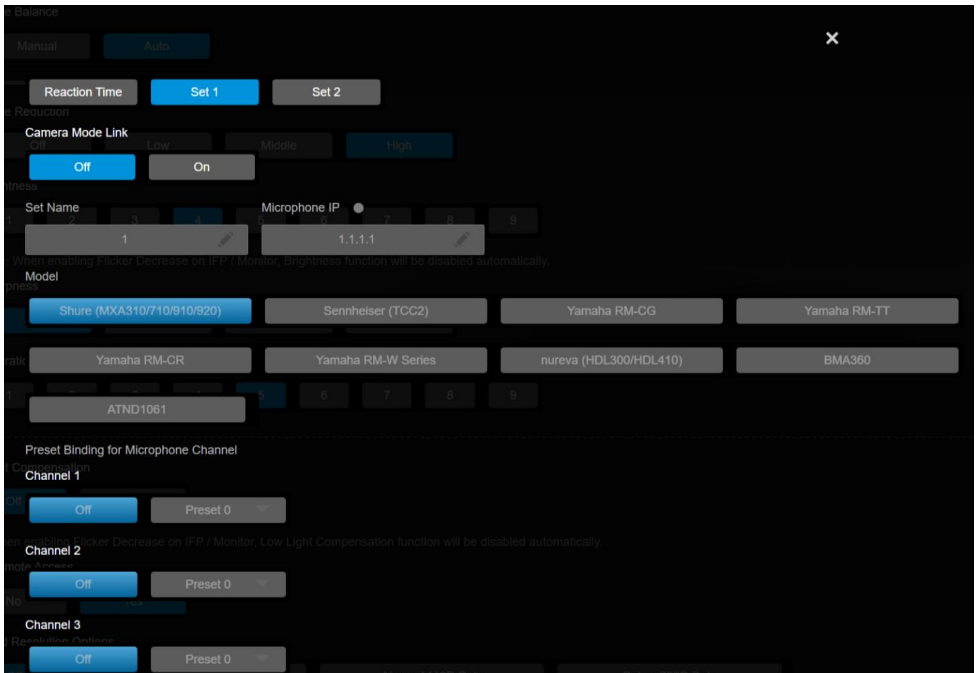
Frame the active talker with voice-tracking functionality by linking AVer devices with third-party microphone systems (supported models).

Note: Refer to the release note from AVer Download Center for the complete list of supported microphones.



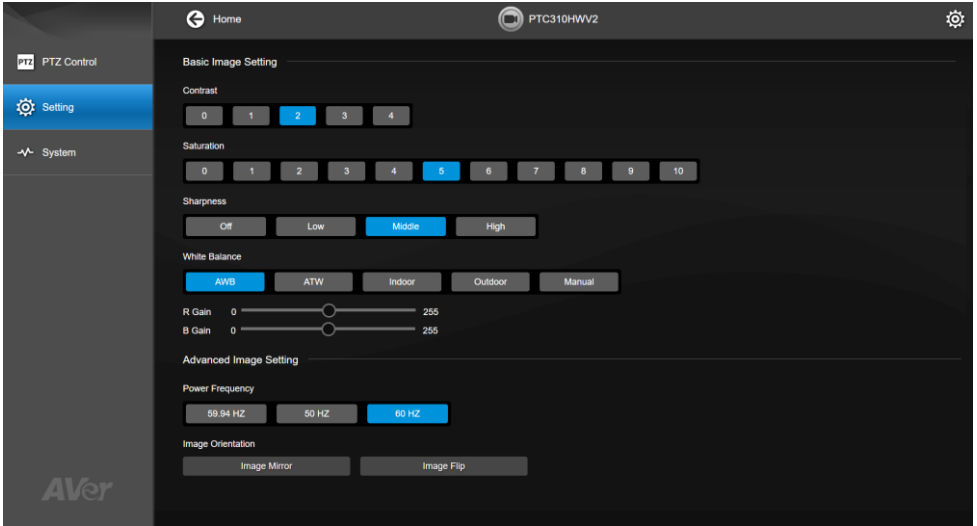
To set up Preset Link:

1. Click **Start** to enter the set-up page, then enter **Set Name** and **Microphone IP** for your microphone to pair with your connected camera. You may set up 2 sets of camera and microphone by default.
2. When finished, click **Enter**.



3. Select **On** to enable audio tracking for the connected microphone and camera. Select the microphone model, and set up the corresponding channels with camera presets.
4. Set up **Reaction Time**:
 - **Time to trigger Preset**: Select an interval for the device to go to a preset after sound detection.
 - **Time to go back to Preset 0**: Select an interval for the device to go to preset 0 after no sound detection.

For Professional Tracking Cameras



Basic Image Setting

Item	Description
Contract	Select a value or a sharpness level to adjust the camera view.
Saturation	
Sharpness	
White Balance	Select a white balance mode, and drag the slider below to adjust the values.

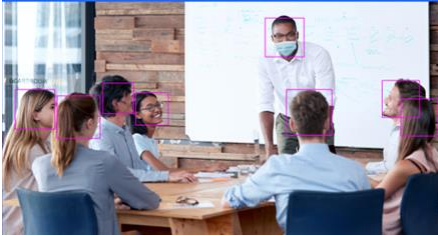
Advanced Image Setting


Item	Description
Power Frequency	Select a power frequency based on your location.
Image Orientation	Select to horizontally or vertically flip the camera view.

Tracking Mode

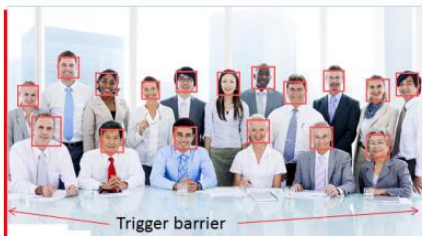
Available tracking modes may vary depending on your device.

Manual Frame



Frames manually using the SmartFrame button  to frame entire group on screen once.

Auto Frame



Frames entire group on screen automatically. If no one is in view, the device will default to preset 0.

Preset Framing



Frames the presenter in real time as they move using presets. If no one is within the presets, the device will default to group framing.

Audio Tracking

Frames active talker on screen.
If no one is speaking, the device will stay at the last position or default to group framing after your selected **Audio Tracking Idle Interval**.

Smart Composition

Creates a close-up frame for up to 8 participants in 4 grids and present them in a single stream composited gallery.

If more than 8 participants are on screen, the camera will default to group framing.

To turn on Smart Composition:

1. Configure the following settings:

AI Detection Source	Main Lens
PIP Layout: off	Off
Extended Resolution Options	Below 720P Only
Video Frame Rate	30Fps

2. Select **Smart Composition**, and click on the drop-down list to select a output source.

Audio Framing+

Frames one or more active talkers in full screen , PIP layout or 2 grids based on different talking conditions.

To turn on Audio Framing+:

1. Configure the following settings:

Stream Output	Select your output
AI Detection Source	Main Lens
PIP Layout: off	Off
Extended Resolution Options	Below 720P Only
Video Frame Rate	30Fps

2. Select **Audio Framing+**.

Presentation Mode



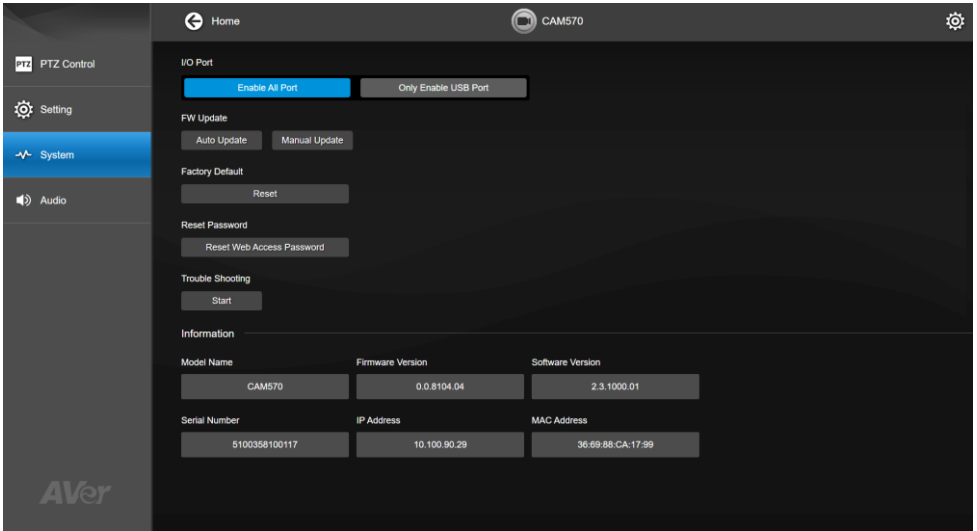
A combination of presets (not Preset Framing) and Audio Tracking.

Uses presets when active speaker is speaking inside of presets; uses Audio Tracking and frames active speaker on screen when they are speaking outside of presets.

If no one is speaking, the device will stay at the last position or default to group framing after your selected **Audio Tracking Idle Interval**.

System

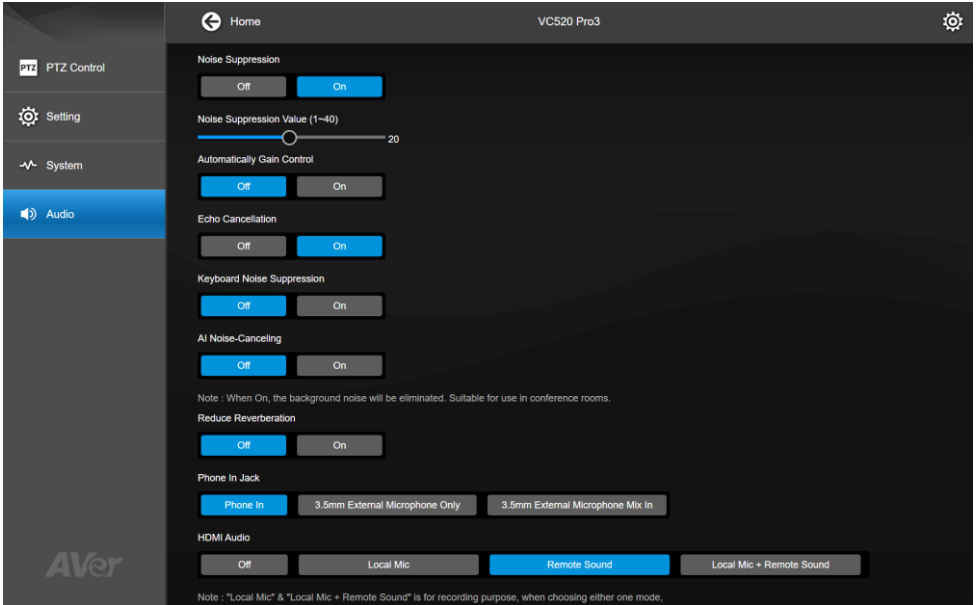
Note: These features are device-sensitive. Refer to your device's user manual for details.



Item	Description
I/O Port	Enable all input/output ports or only the USB port.
Firmware Update	<p>Update your device's firmware.</p> <ul style="list-style-type: none"> Auto Update: Checks and updates online. Manual Update: Update the firmware using a file offline. <p>Note: the device will reboot and the connection will be lost. Please wait a few minutes and keep the power cable connected. If the cable is unplugged during this process, it will cause damage to the device.</p>
Factory Default	<p>Reset your device to factory default settings:</p> <ul style="list-style-type: none"> Video conferencing devices: Select the checkmark to keep the IP address, web interface password, or both. Professional devices: Factory default resets both IP address and web interface password.
Reset Password	<p>Reset the web interface password.</p> <ul style="list-style-type: none"> The default password is aver4321.
Troubleshooting	Generate an error log for an AVer technician.
Test Speakerphone	Test your speakerphone by recording a message.
Information	Displays your device information such as IP address.

Audio

Note: These features are device-sensitive. Refer to your device's user manual for details.



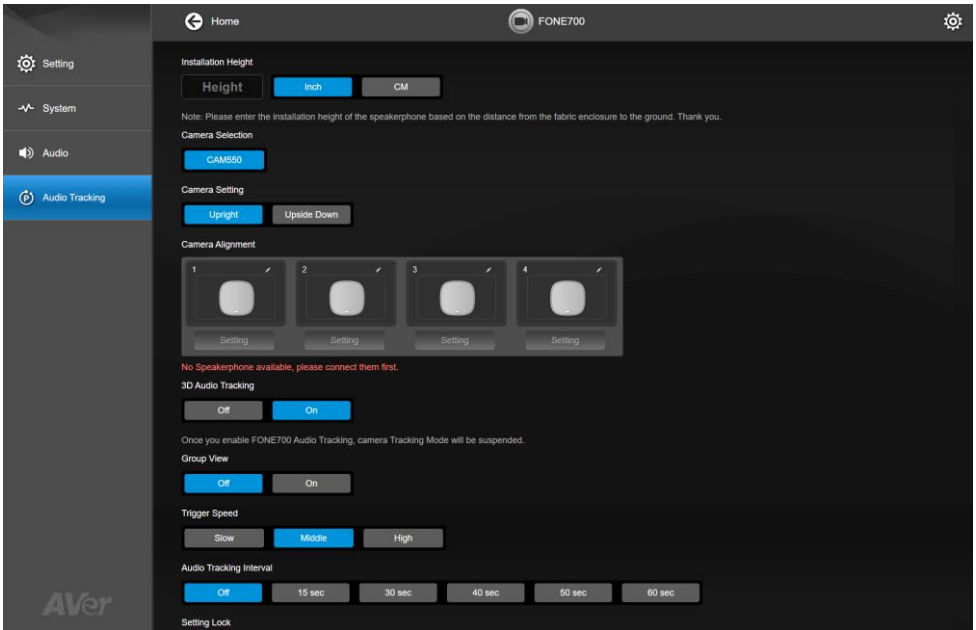
Item	Description
Noise Suppression	Reduce ambient noise.
Automatically Gain Control	Maintain a constant output audio level.
Echo Cancellation	Reduce echo.
Keyboard Noise Suppression	Reduce keyboard noise.
AI Noise-Canceling	Reduce the sound of crying babies or barking dogs.
Reduce Reverberation	Reduce the sound reverberation within a room.
Phone In Jack	Select an audio source based on the device connected to the phone in port and use case: <ul style="list-style-type: none"> • Phone In: Connect a smartphone to communicate with remote participants. • 3.5 mm Microphone Only: Use only your connected external microphones as audio sources. • 3.5 mm Microphone Mix In: Use both the FONE540 and your connected external microphones as audio sources.
HDMI Audio	Select an audio output source when your device is connected to an HDMI display device during video conferencing. <ul style="list-style-type: none"> • Local Mic: Use the device microphone as the audio output source for HDMI display.

	<ul style="list-style-type: none"> • Remote Sound: Use the sound receiving from the far-end as the audio source. When selected, adjust the HDMI Output Delay Time (0~500ms) to resolve audio desync if needed. • Local Mic + Remote Sound: Use the device microphone and the sound receiving from the far-end as the audio source. <p>Note: To avoid echoes during HDMI audio output, we recommend you select Local Mic and Local Mic + Remote Sound only for audio or video recording.</p>
HDMI Output Sync	Select Manual and drag the slider to adjust the audio delay time when experiencing discrepancy between the camera view and HDMI audio output.

Audio Tracking

Pair your FONE700 Speakerphone with CAM550 PTZ conferencing camera for audio tracking and dual camera tracking. Follow the steps below for customized configuration.

1. Install FONE700 Speakerphone to an ideal place.
2. Power your FONE700 Hub and CAM550 on and connect to your computer using USB cables.
3. On Device Control page, go to CAM550 **Setting** page > **Preset Link** and select **On**.
4. Return to Device Control page, go to FONE700 **Setting** page > **Audio Tracking** for further setup.



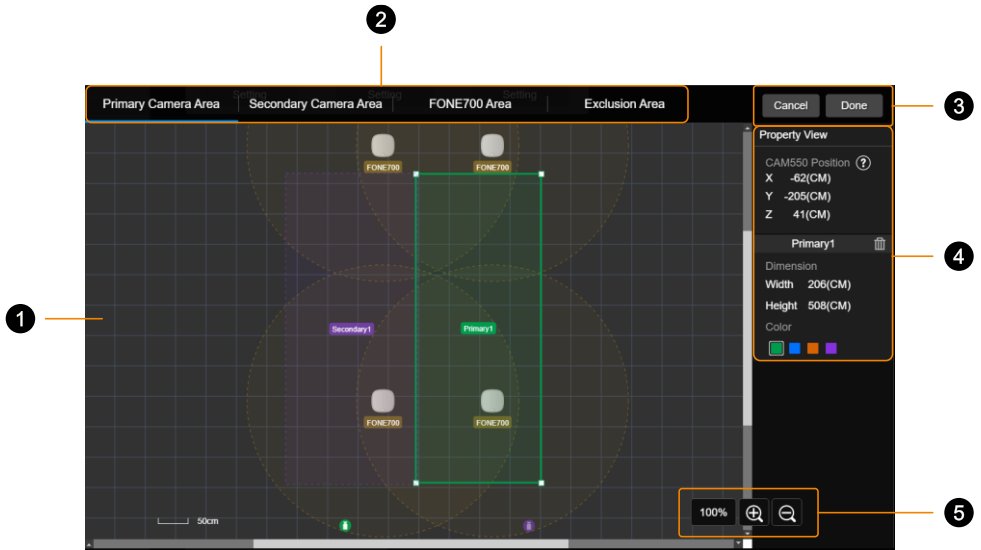
Item	Description
Installation Height	Enter the distance from speakerphone fabric enclosure to the ground, NOT from the ceiling. Select the measurement unit between Inch and CM .
Camera Selection	This feature only supports CAM550 for now.
Camera Setting	<ul style="list-style-type: none"> • Upright: Select when position your camera upright. • Upside Down: Select when mount your camera upside down.
Camera Alignment	<ul style="list-style-type: none"> • Setup <ol style="list-style-type: none"> 1. Select a connected camera in Camera Selection.

	<ol style="list-style-type: none"> 2. Click Setting, and follow the on-screen instruction to align your FONE700 Speakerphone. 3. After setting up the first speakerphone, select: <ul style="list-style-type: none"> - Manual Alignment to continue setting up other speakerphones with camera alignment; - Finish and Set Speakerphone Position to set up other speakerphones by entering their 3D distances in relation to the first one. 4. If necessary, click Redo to realign the speakerphone. <ul style="list-style-type: none"> • Rename Click the pencil icon on the thumbnail to rename the speakerphones.
3D Audio Tracking	<p>Turn FONE700 audio tracking on or off.</p> <p>When turned on, the camera tracking mode will be turned off.</p>
Group View	Track and frame multiple active talkers on your camera view.
Trigger Speed	<p>Select an audio tracking trigger speed. Slower speed is useful for ignoring short utterances during audio tracking.</p> <ul style="list-style-type: none"> • Slow: Audio track after 2-3 seconds. • Medium: Audio track after 1-2 seconds. • High: Audio track immediately.
Audio Tracking Interval	<p>Select a duration for the camera to return to Preset 0 after no sound is detected. If Off is selected, the camera will stay at the last position.</p>
Setting Lock	Lock all current settings.
Dual Camera Tracking	<p>Connect 2 CAM550 cameras to your computer, and select On for dual camera tracking. For further configuration, click Setting and refer to the following instructions.</p>

Dual Camera Tracking

When more than one CAM550 is installed in your meeting room, you may customize the effective tracking area. We recommend setting the area to cover angles where the cameras can capture participants' faces directly.

Pair CAM550 with FONE700 Speakerphone before setting up this function.



1. Workspace

Drag and drop to set, resize or move the customizable tracking area.

2. Setting Tabs

Set up tracking areas for the primary and secondary CAM550, and view FONE700 effective audio tracking area.

3. Save and Exit

Click **Done** to save settings after configuration.

4. Property View

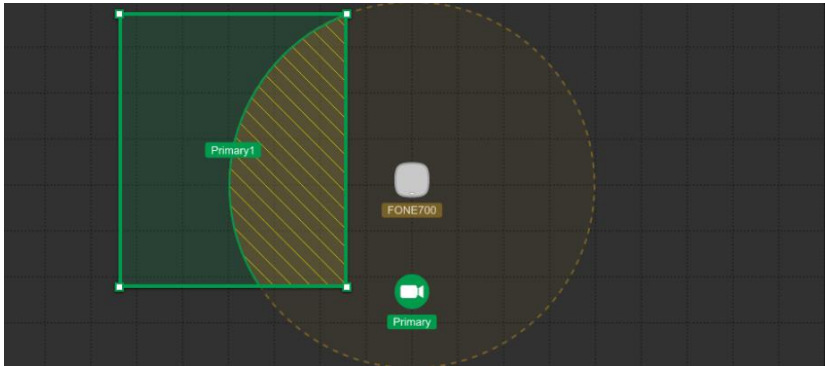
View and edit the tracking area position and dimension

5. Zoom in and out

Adjust the workspace display size.

To set up effective tracking area:

1. Drag and drop a rectangle on the workspace to set up the primary camera tracking area.
The overlapping area between the camera tracking area and the speakerphone audio receiving range will be the effective audio tracking area.



2. Drag the selection handles to resize, or enter dimension values in **Property View**. You may also change the highlighting color.
3. Set up the camera tracking area for the second camera with the same steps mentioned above

To set up exclusion area:

1. Go to **Exclusion Area** tab, drag and drop a rectangle on the workspace to set up the area that you wish to exclude from the effective tracking area.
2. To delete the exclusion area, select in the **Property View** and click the trash can icon.

